

# Super energy-saving insulated glass for refrigerator doors 4+6A+4 with low e-coating prices



## What is 4+6A+4mm upright insulated glass for refrigerator doors?

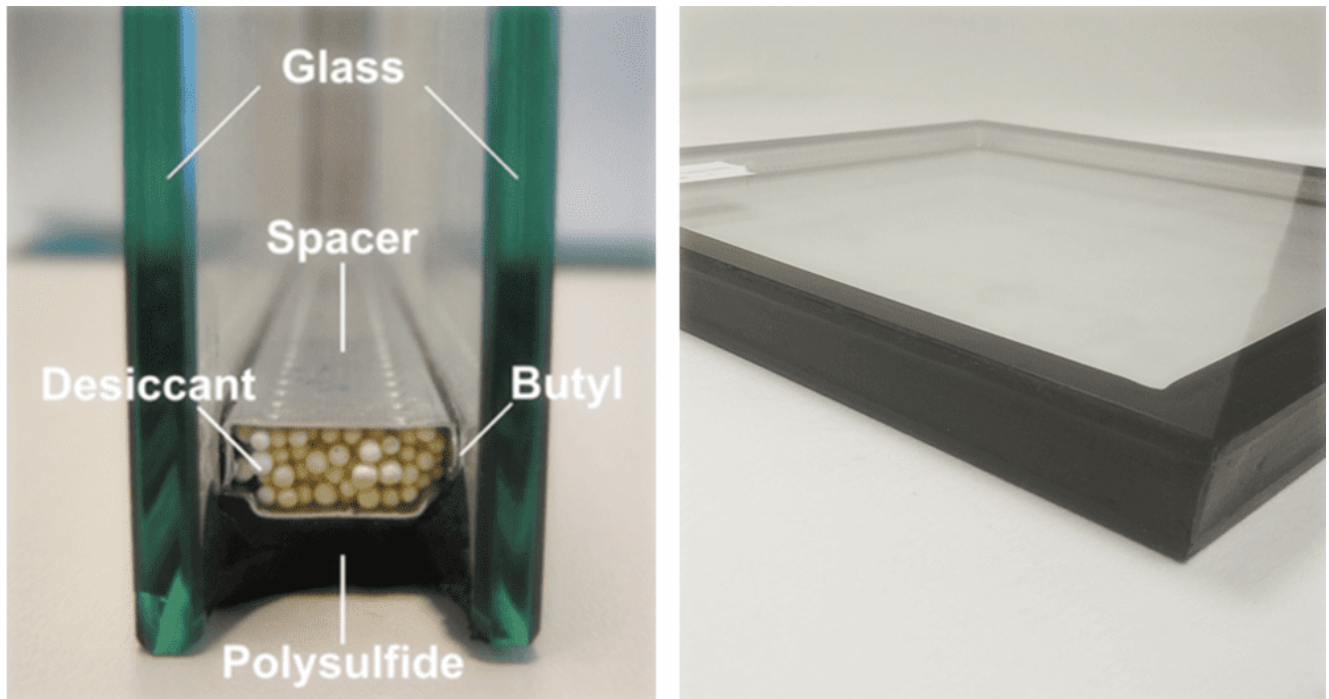
Upright insulated glass for refrigerator doors means specially made [insulated glass](#), especially with high performance of energy saving, which could help refrigerators to isolate the heat transfer. With low e coating applied on the glass surface, the IGU glass can achieve a U value lower than 1.8W/m<sup>2</sup>K, which means you could keep the cooling environment inside the refrigerator, therefore saving the electric power

supply.



4+6A+4mm low e upright insulated glass consists of one panel of 4mm low e glass and one panel of 4mm clear glass, both are tempered and then isolated with a 6mm aluminum spacer. The

aluminum spacer is filled with moisture which could also keep the vapor and air coming through to the chamber. On the edge of the IGU panel, there are butyl sealants and structural sealants to enhance the isolation.



## Features:

1. High transmittance: with high transmittance glass and low e coating, we can ensure the IGU glass with 70~80% visual light transmittance.
2. Super lightweight: The panel is only 22KG/SQM, making it super light for movement, you don't have to worry about opening and shutting doors.
3. Excellent power saving performance: With high-performance low e coating applied on the glass, you can have low U value and good isolation of the heat, in a result you have the electric power saved.
4. Multiple options for the glass panels: you can also choose 3mm glass, 3.2mm glass, 5mm glass, etc. Tinted

glass like grey color, bronze color, etc is according to your style.

## Quality

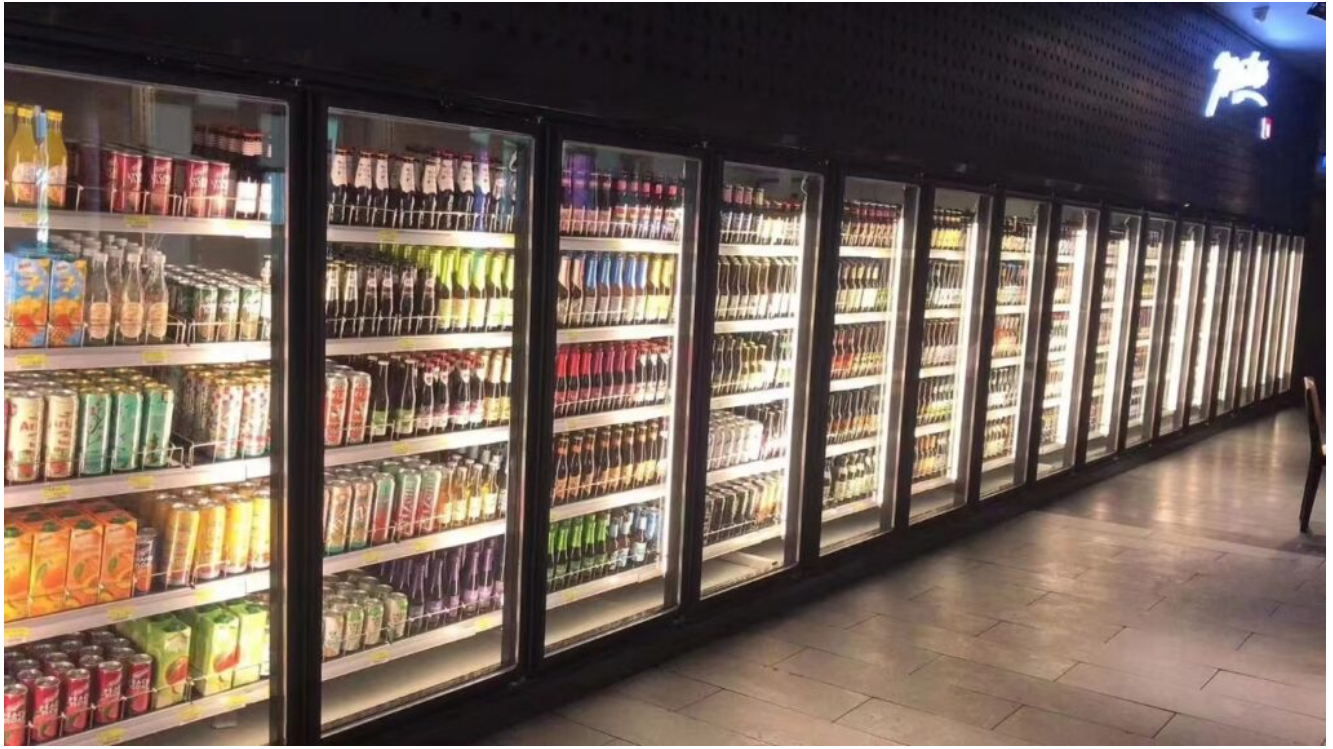
- AS
- CE
- ISO9001
- ASTM
- CCC

## Applications

You can use the IGU glass for refrigerator doors:













# Shenzhen Dragon Glass insulated glass for refrigerator performance

<b>Production name:</b> 4mm+6a+4mm insulated glass, Upright Cooler with Glass Door
<b>Glass thickness:</b> 14mm
<b>Glass color:</b> Clear
<b>Glass shape:</b> Flat, Curved is available;
<b>Process:</b> Coating, cutting, edging, tempering, insulating, packing, etc;
<b>Quality:</b> CE/ASTM/AS/ISO9001/BS/CE;
<b>Packing:</b> Strong plywood crates;
<b>Capacity:</b> 1000SQM/day;
<b>Production time:</b> 10~15 days;

## Packing details:





If you are interested in Insulated Glass for refrigerator doors, please [contact](#) the Dragon Glass team today, our team of experienced [glass experts](#) is ready to answer any questions you may have.