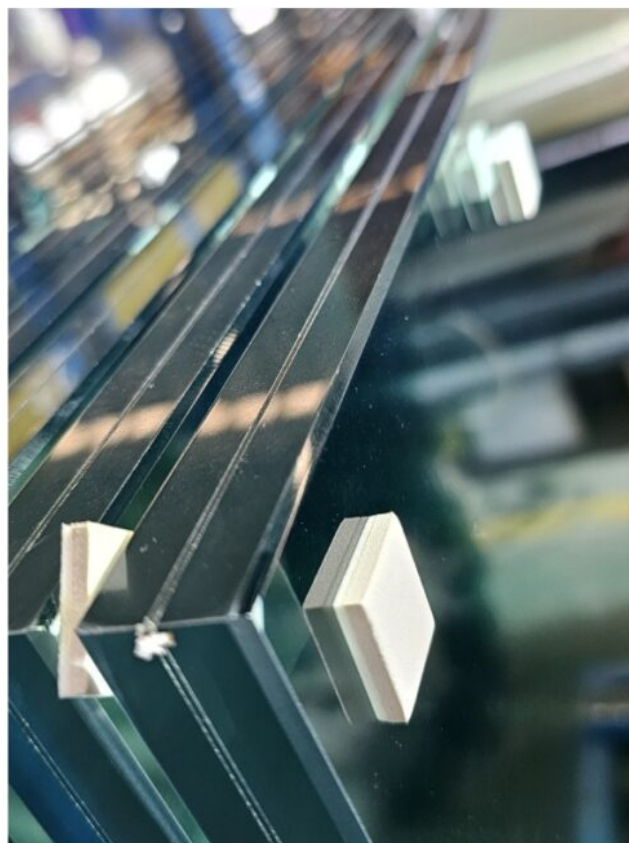


Integral Edge of 20mm Safety Laminated Glass - A Nice Decoration for Balustrade





Integral Edge of 20mm Safety Laminated Glass

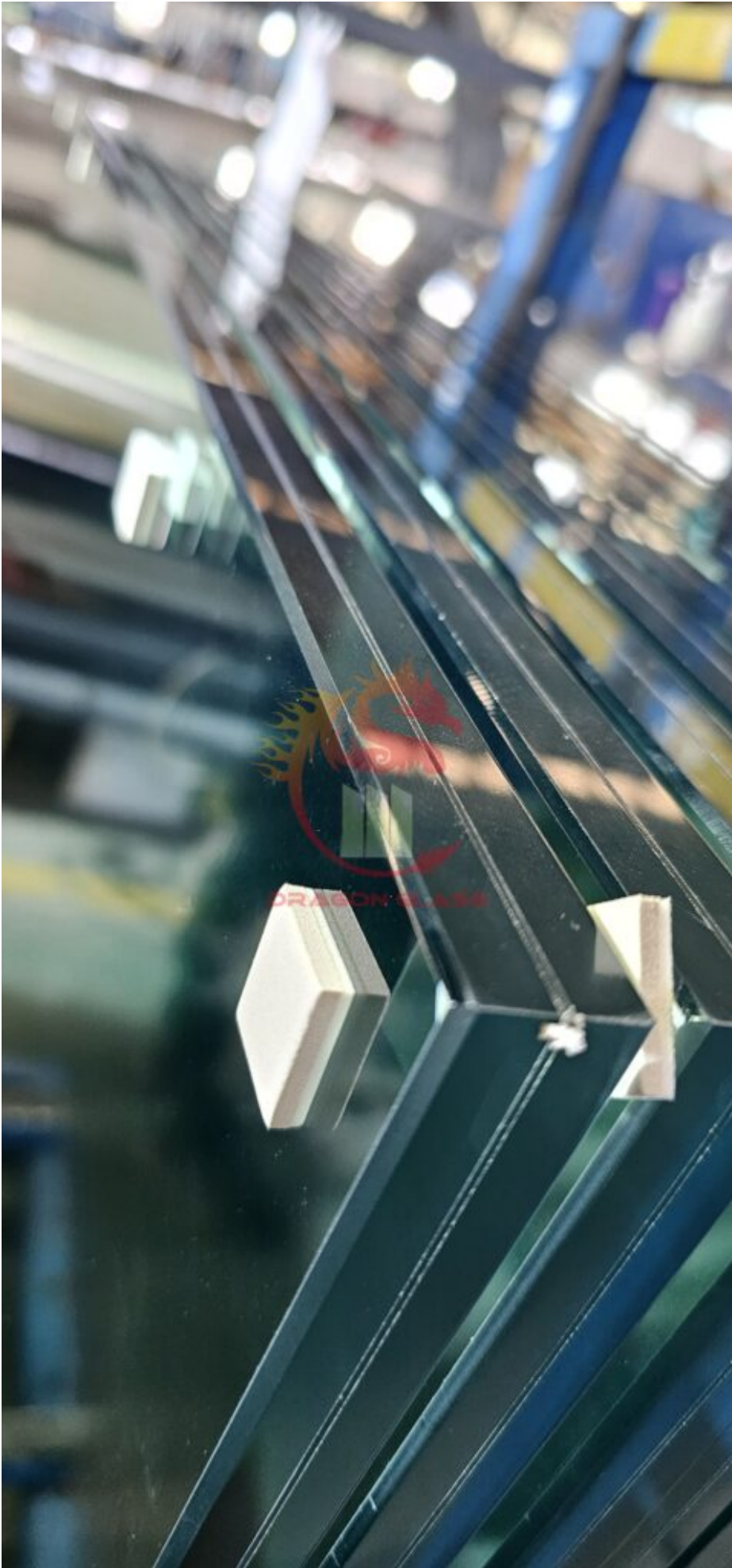
What is 20mm Safety Laminated Glass?

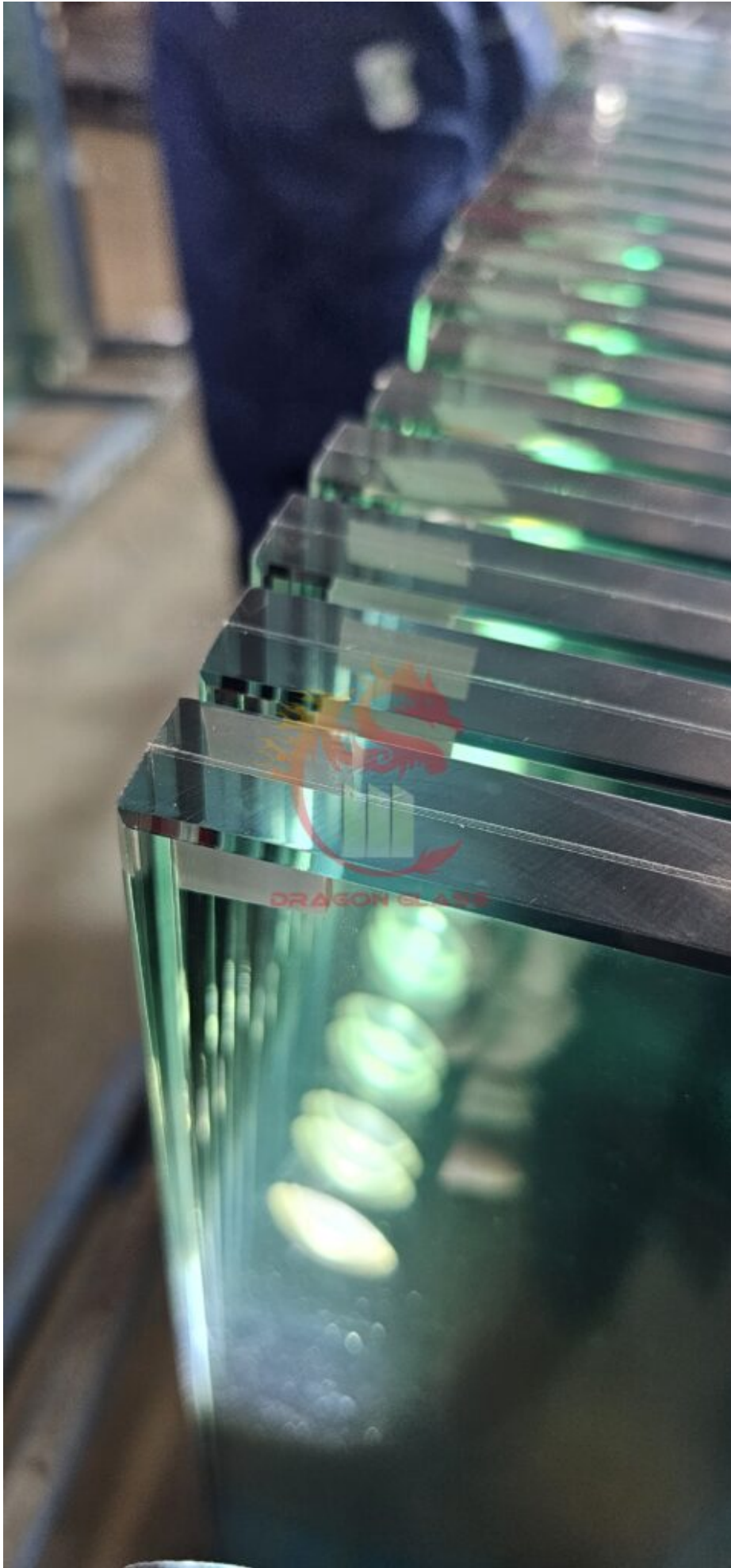
0mm Safety Laminated Glass is a high-performance safety glass made by bonding two layers of [10mm non-toughened](#) (non-tempered) glass with a 1.52mm PVB (Polyvinyl Butyral) interlayer. If you want to toughen the process, the [toughening process](#) involves heating the glass to high temperatures and then rapidly cooling it, which increases its strength and makes it up to five times stronger than annealed glass, **but the problem is that it can not do such beautiful edges.**

The PVB interlayer not only enhances the glass's strength but also ensures that even if the glass breaks, the shards remain bonded to the interlayer, preventing injury. This makes [20mm Polished edges laminated glass](#) a popular choice for applications requiring both safety and durability, such as balustrades, railings, and facades.

The integral edge design adds a sleek, polished finish to the glass, making it not only functional but also a decorative element in modern architecture.

Why do Integral Edge for 20mm Safety Laminated Glass?





The integral edge is a critical feature of 20mm Laminated Safety Glass, especially for balustrades and railings. Here's why:

Aesthetic Appeal

The integral edge provides a smooth, polished finish that enhances the visual appeal of the glass. It eliminates rough edges, giving the glass a premium look that complements modern designs.

Safety

The integral edge ensures that the glass edges are smooth and free from sharpness, reducing the risk of injury during handling or installation.

Durability

The integral edge design strengthens the glass, making it more resistant to chipping or cracking at the edges. This is particularly important for high-traffic areas like balustrades and railings.

Ease of Installation

The polished edges make the glass easier to handle and install, reducing the risk of damage during the installation process.

What Else Should be Considered for 21.52mm Annealed Laminated Glass Railings?

When choosing 21.52mm Annealed Laminated Glass for railings, several factors should be considered to ensure optimal performance and safety:

Load-Bearing Capacity

Same as tempered laminated glass, it ensures the glass can withstand the required load, especially for [railings](#) in public spaces or high-rise buildings.

UV Resistance

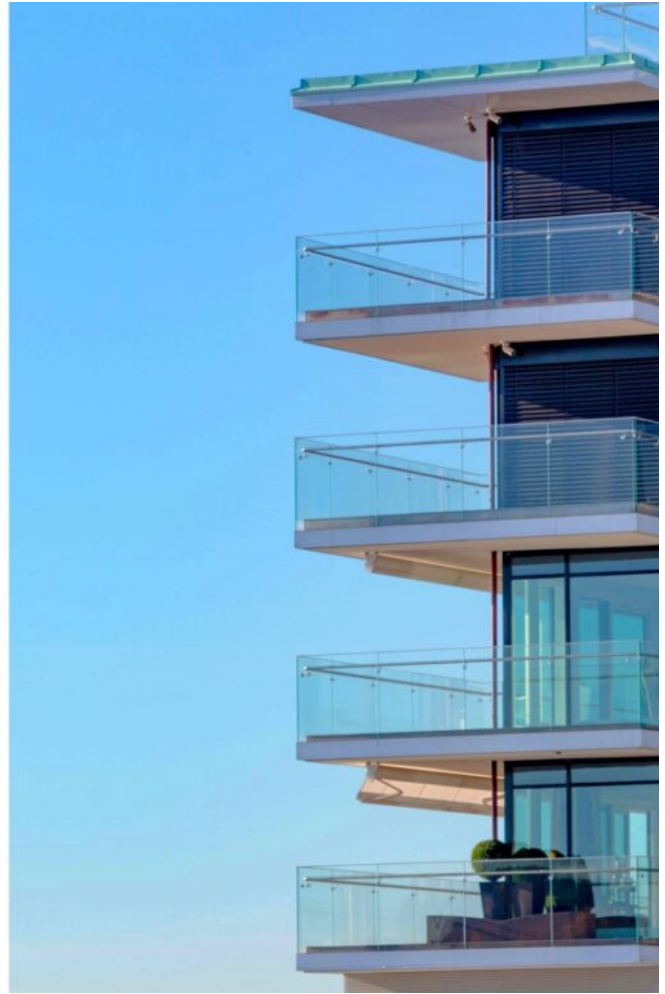
The PVB interlayer should offer UV protection to prevent the fading of interior furnishings.

Compliance with Standards

Ensure the glass meets relevant safety and quality standards, such as EN 12600 and ASTM C1172.

Customization

Choose a supplier that offers customization options for size, thickness, and edge finish to meet your specific project requirements.



The 10104 Laminated Safety Glass used in different locations

Specification of 20mm Safety Laminated Glass

Property	Details
Thickness	10mm + 1.52mm + 10mm (20mm total)
Glass Type	10104 Laminated safety glass panel
Interlayer	1.52mm PVB
Edge Finish	Integral Edge (Polished)
Dimensions	Customizable

Property	Details
Weight	Approximately 50 kg/m ²
Light Transmission	~86%
UV Resistance	Yes
Safety Standards	EN 12600, ASTM C1172

Certification from Dragon Glass for 10104 Laminated Safety Glass

At [Dragon Glass](#), we ensure that our 10104 Laminated Safety Glass meets the highest international standards. Our products are certified under:

- **EN 12600**: European standard for laminated glass.
- **ASTM C1172**: American standard for laminated architectural flat glass.
- **ISO 9001**: Quality management certification.

These certifications guarantee that our glass is safe, durable, and reliable for all applications.

Client check quality in our factory

Inspection & Packaging for 20mm Safety Laminated Glass

We take great care in inspecting and packaging our 20mm Safety Laminated Glass to ensure it reaches you in perfect condition:

Inspection

Every glass panel undergoes rigorous quality checks, including:

- Visual inspection for defects.
- Thickness and dimension verification.
- Strength and safety testing.



Inspection for glass

Packaging

Our glass panels are packed using high-quality materials to prevent damage during transit:

- Protective corner guards.
- Bubble wrap or foam padding.
- Sturdy wooden crates for large orders.



Loading glass to container

Why Choose Dragon Glass as Your 20mm Laminated Safety Glass Supplier?

Here's why Dragon Glass is the preferred choice for 20mm Laminated Safety Glass:

Premium Quality

We use only the best materials and advanced manufacturing techniques to ensure superior quality.

Customization

Our products can be tailored to meet your specific requirements, including size, thickness, and edge finish.

Competitive Pricing

We offer 20mm Hardened Laminated Glass at competitive prices without compromising on quality.

Expertise

With years of experience, we provide expert advice and support for your projects.

Timely Delivery

We ensure fast and reliable delivery to meet your deadlines.



Regular training

Ready to enhance your project with 21.52mm Annealed Laminated Glass? [Contact Dragon Glass](#) today to request a quote or learn more about our products. Let us help you create stunning, safe, and durable glass solutions for your architectural needs.