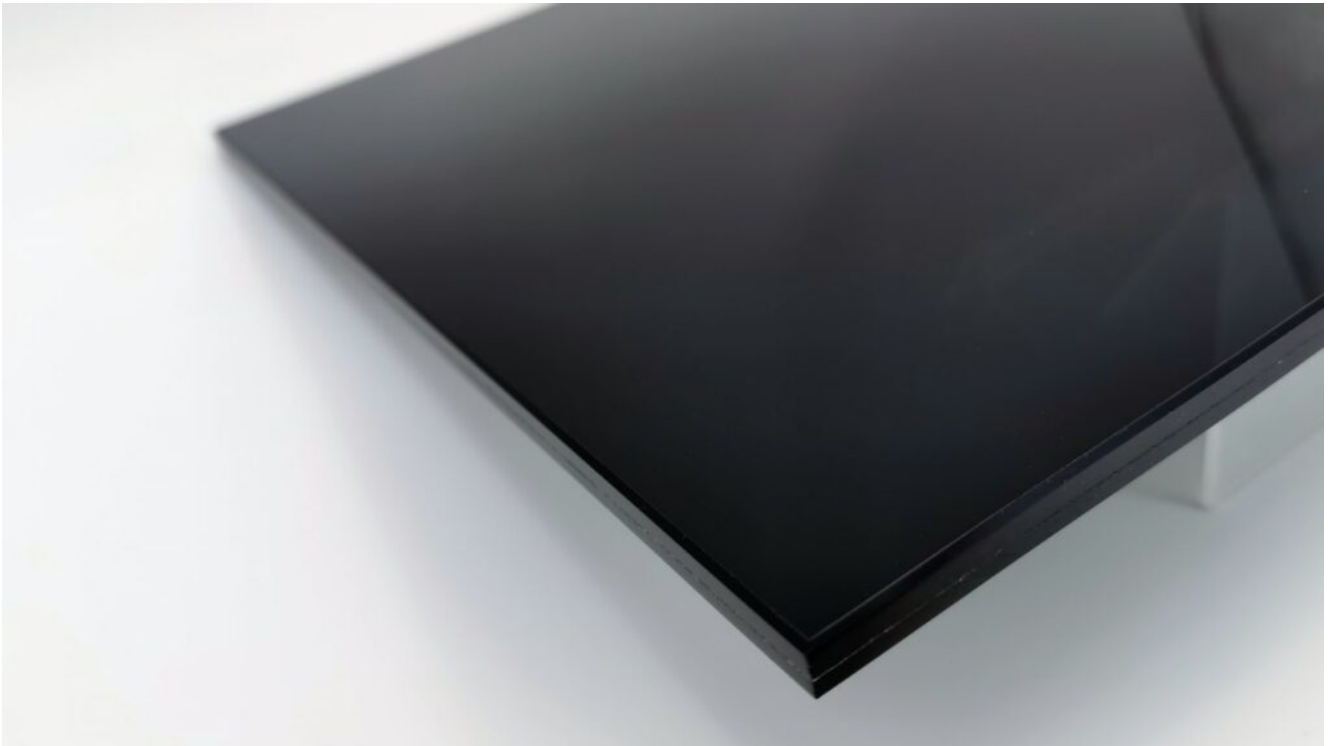


10+10 mm Gray Laminated Glass For The Deck Railing System | 2024 Attractive Balustrades Ideas



What is 10+10 mm gray laminated glass for the deck railing system?

10+10 mm gray laminated deck railing system glass is crafted from two layers of 10mm thick, high-quality gray laminated glass pane, ensuring exceptional durability and safety. The gray tint adds a contemporary touch, blending seamlessly with modern architectural designs while providing privacy without compromising on natural light.

Shenzhen Dragon Glass also provides another way to produce grey laminated glass – use clear glass and gray PVB to achieve the same effect.

[8+8mm Grey Laminated Glass for Glass Balustrades | 2024 Attractive Balustrades Ideas](#)

[Grey Laminated Glass | SDG High Quality LamiGlass Color PVB Series](#)

Why use gray laminated glass for the deck railing system?

The advanced lamination process ensures the glass remains intact even if shattered, significantly reducing the risk of injury. This makes it an ideal choice for spaces where safety is paramount. The polished edges and precision engineering guarantee a flawless finish, enhancing the overall look of your property.

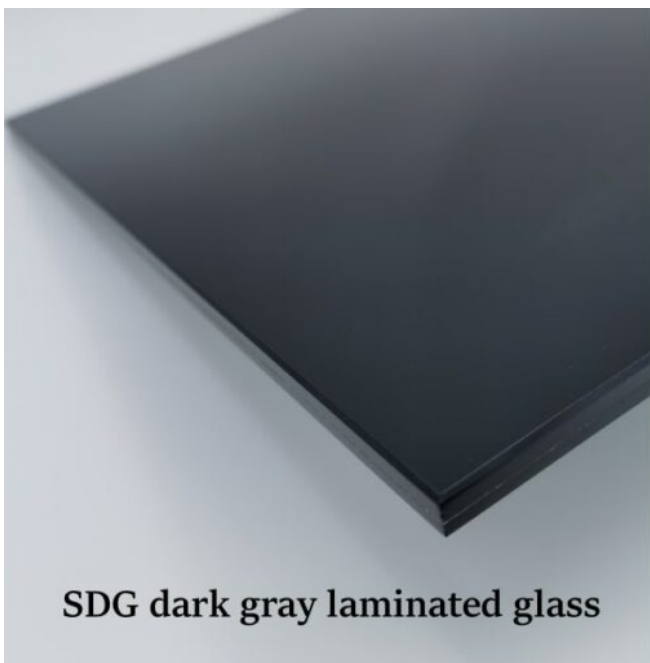
Choose the 10mm+10mm grey laminated glass railing system to elevate your space with a perfect blend of style, strength, and safety. It's not just a railing system; it's a statement of sophistication and security.

How to produce 10+10 mm gray laminated glass pane

- 1. Cutting 10mm dark gray glass or light gray glass to the desired size.
- 2. The glass surfaces are thoroughly cleaned to remove any dust, dirt, or residues that could affect the quality of the laminated glass.
- 3. 10mm gray glass tempered process (if needed).
- 4. The assembled glass sheets and interlayer are placed into a laminating oven or autoclave. Heat and pressure are applied to bond the layers together. The temperature and pressure levels are carefully controlled to ensure proper lamination and to eliminate any remaining air bubbles.
- 5. Cooled gradually to room temperature to stabilize the structure, any excess interlayer material is trimmed from the edges of the laminated glass.
- 6. The finished laminated glass undergoes quality control checks to ensure that it meets the required

strength, safety, and appearance standards. This includes visual inspection, measurements of thickness and color, and testing for durability and impact resistance.

Choose from two opacity levels – SDG Euro Grey Laminated Glass and SDG Dark Grey Laminated Glass – to suit your preferences. These options offer varying levels of privacy screening and diffusion of light, allowing you to create the perfect ambiance for your space.



Benefits:

Durability

The laminated glass pane is highly resistant to impacts,

weather conditions, and UV radiation. The gray tint helps reduce glare and fading caused by the sun, ensuring the railing system maintains its appearance and functionality over time.

Privacy

The gray tint provides an additional layer of privacy without completely blocking the view. This makes it ideal for residential decks and balconies, allowing you to enjoy your outdoor area without feeling exposed.

Safety

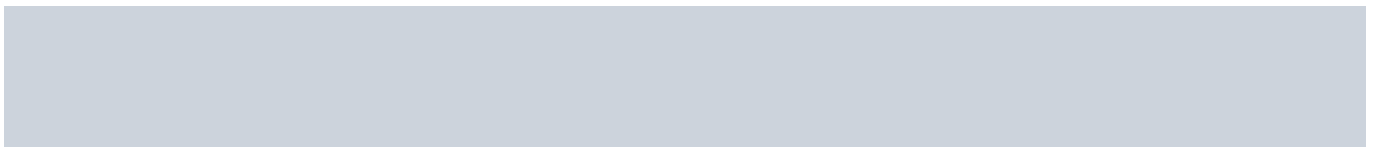
A laminated glass pane is constructed by bonding two glass layers with a tough interlayer, typically made of polyvinyl butyral (PVB). This process ensures that even if the glass is broken, it stays intact, reducing the risk of injury from sharp shards.

Enhanced Aesthetic Appeal

Grey laminated glass offers a sleek, modern look that complements contemporary architectural styles. Its neutral tone seamlessly blends with various design elements, adding a sophisticated touch to your outdoor space.

Sound Insulation

The laminated glass also offers excellent acoustic properties, helping to reduce noise from the surrounding environment. This is particularly beneficial for decks located in urban areas or near busy roads.



Low Maintenance

Grey laminated glass is easy to clean and maintain. It resists stains and smudges, ensuring that your deck railing looks pristine with minimal effort.

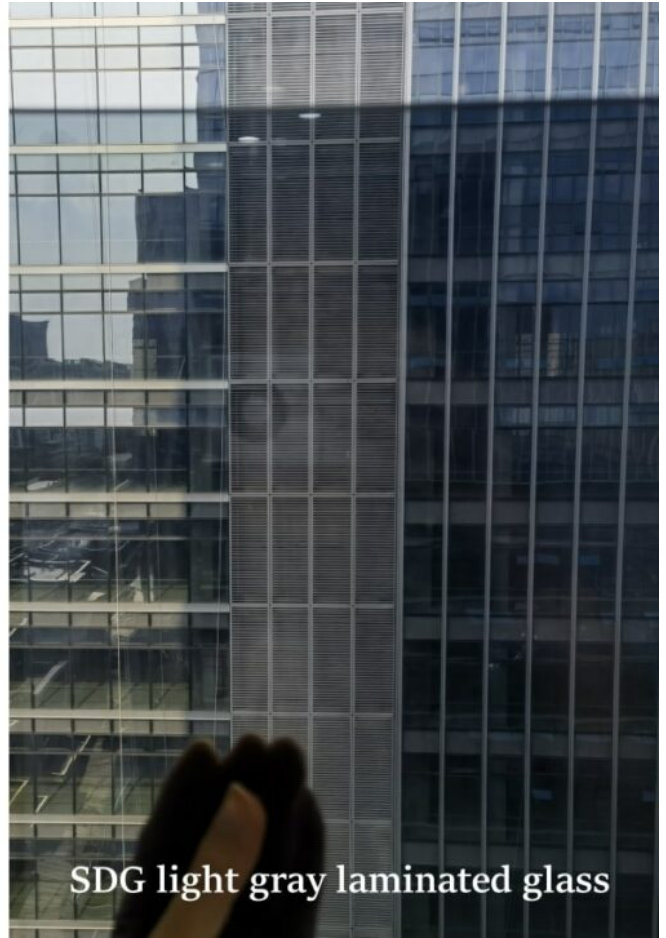
By choosing grey laminated glass for your deck railing system, you gain a perfect combination of style, privacy, safety, and durability, enhancing both the aesthetic and functional aspects of your outdoor living space.

Specifications:

Production name: 10+10 mm gray laminated glass for the deck railing system
Glass thickness: 21.52mm
Interlayer type: Clear PVB
Glass color: Dark gray or light gray, other colors clear, low iron, bronze, blue, green, etc are available.
Max size: 3300*13000mm;
Shape: flat or curved.
Quality: CE/ASTM/AS/ISO9001/BS;
Packing: Strong Plywood Crates;
Capacity: 1000SQM/day;
Production time: 10~15 days;



SDG dark gray laminated glass



SDG light gray laminated glass



SDG dark gray laminated glass



SDG light gray laminated glass

A close-up photograph of a corner of a dark gray laminated glass panel. The glass is set within a white frame, and the background is a light, neutral color. The text 'SDG light gray laminated glass' is overlaid in white at the bottom of the image.

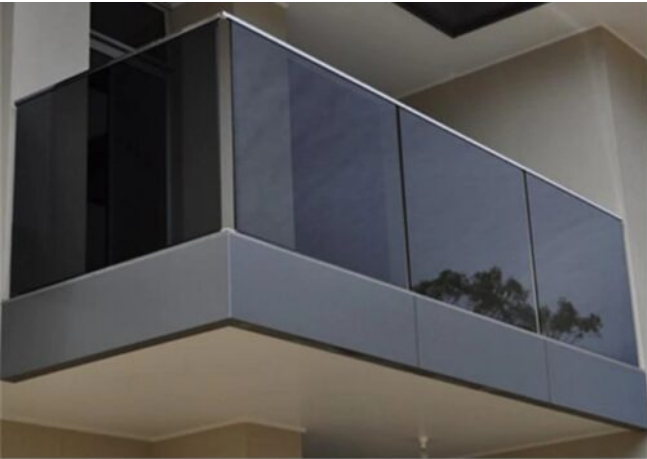
SDG light gray laminated glass

A photograph showing a dark gray laminated glass panel. The panel is dark and occupies the lower-left portion of the frame. The background is a light, neutral color. The text "SDG dark gray laminated glass" is overlaid on the dark panel in white font.

SDG dark gray laminated glass



Application:





Upgrade your deck with our 10+10 mm Gray Laminated Glass Deck Railing System and experience the perfect blend of modern aesthetics and superior safety. Featuring a sleek gray tint, this railing system offers privacy without compromising your view, making it the ideal choice for any contemporary outdoor setting.

Ready to Upgrade?

Enhance your outdoor living space with our 10+10 mm Gray Laminated Glass Deck Railing System today. Contact us now to learn more and get started.