

# Hochwertiger Sichtschutz aus 6 mm sandgestrahltem Glas

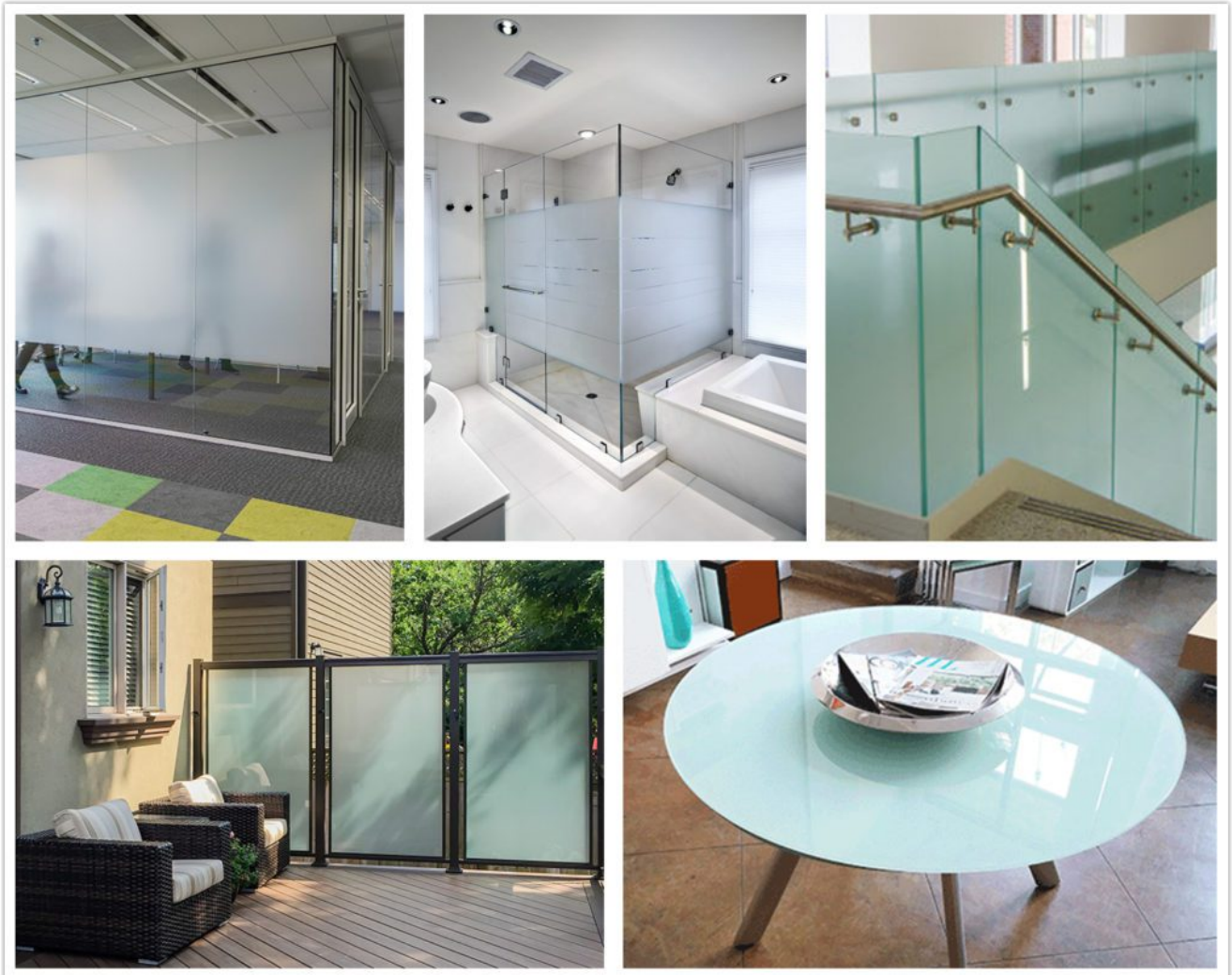


Haben Sie schon einmal bemerkt, dass einige der Glasoberflächen rau sind? Diese Art von Glas wird [Milchglas](#) genannt. Es gibt zwei Arten, sandgestrahltes Glas und geätztes Glas. Normalerweise ist das Glas auf einer Seite rau und auf der anderen Seite glatt. Wie wird das Glas hergestellt? Lass es uns herausfinden.

## Was ist sandgestrahltes Glas?

Sandgestrahltes Glas wird hergestellt, indem Sand mit hoher Geschwindigkeit über die Glasoberfläche gesprüht wird. Dadurch erhält das Glas eine durchscheinende Oberfläche, die meist rauer ist als beim Ätzen. Die Tiefe und der Grad der Lichtdurchlässigkeit der Glasveredelung variieren mit der Stärke und Art des verwendeten Sandes, dann werden die Muster und Designs individuell angepasst.

# Anwendungen



## Sechs Gründe, warum Sie sich für Sichtschutzglasgeländer entscheiden

- 1. Attraktivität:** Glasgeländer sind attraktiv und sehen schöner aus als Holzgeländer. Es erhöht die optische Attraktivität.
- 2. Stärke:** Das Härten macht das Glas fünfmal stärker als gewöhnliches Glas. Keine Angst vor Glasbruch.
- 3. Sicherheit:** Selbst wenn das Glas zerbricht, ist es unwahrscheinlich, dass Sie sich verletzen, da es sich um Sicherheitsglas handelt.

**4. Haltbarkeit:** Glas hat eine viel längere Lebensdauer als Holzgeländer. Es kann Wind, Wasser und Kratzern widerstehen. Es ist noch Jahre später in gutem Zustand.

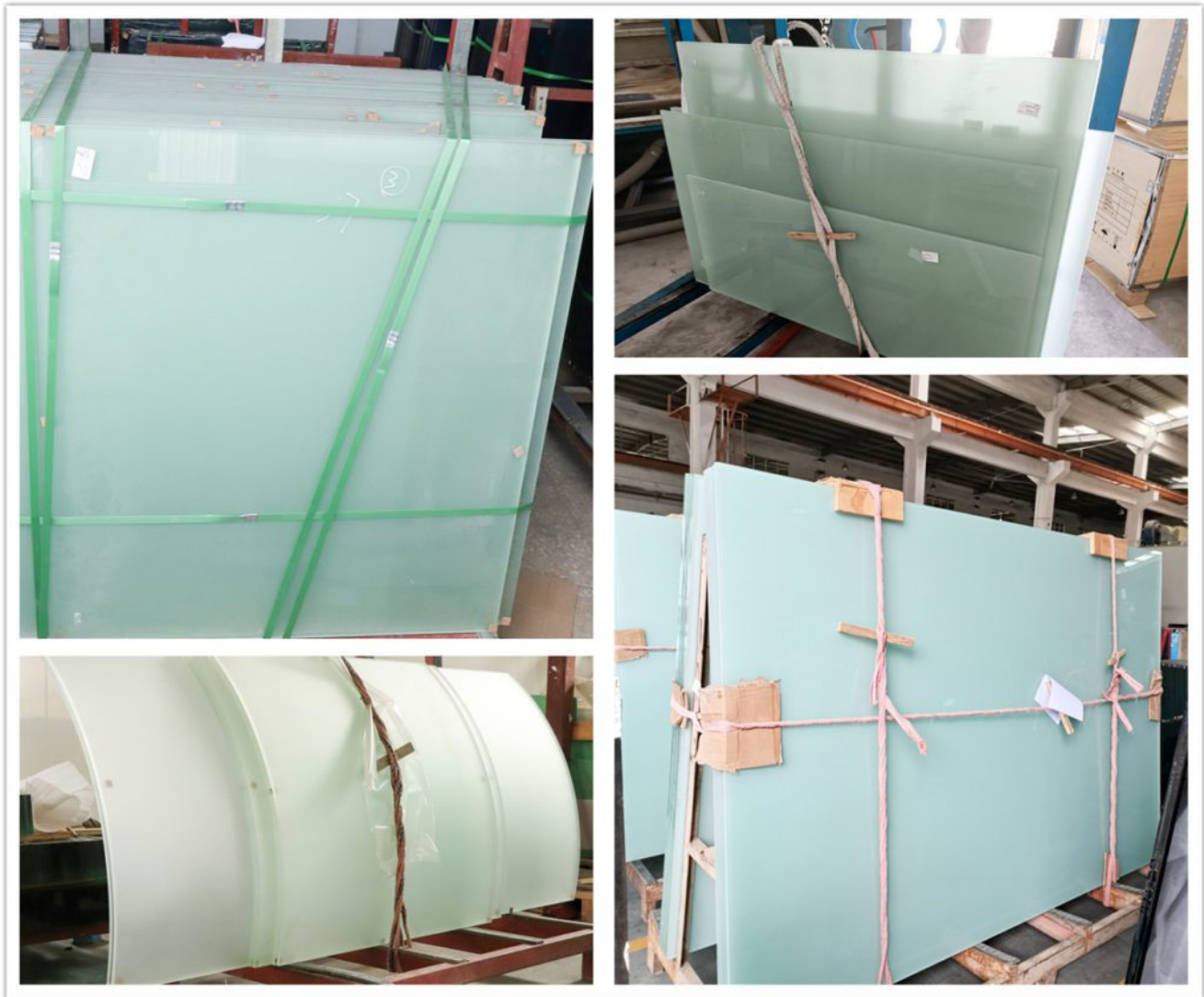
**5. Einfache Wartung:** Haben Sie die Wartung von Holzgeländern satt? Die Glasoberfläche lässt sich leicht mit Wasser und etwas Reiniger reinigen.

**6. Privatsphäre:** Milchglas sorgt für mehr Privatsphäre, die Ihr Zuhause von den Nachbarn trennt.



**Sichtschutz**

## Produktdetails



## Milchglas

# Spezifikationen

<b>Glasart:</b> gehärtetes Ätztglas, gehärtetes sandgestrahltes Glas, laminiertes Milchglas
<b>Dicke:</b> 5 mm, 6 mm, 8 mm, 10 mm, 12 mm
<b>Größe:</b> angepasst
<b>Farbe:</b> klar, ultraklar, getönt
<b>Form:</b> flach, gebogen
<b>Anwendungen:</b> Fenster & Türen, Sichtschutz, Geländer, Tischplatten, Duschabtrennungen etc.
<b>Verpackung:</b> starke Holzkiste
<b>Produktionszeit:</b> 5 bis 20 Tage

## Verpackung & Versand



## Zertifikate

**DECLARATION OF CONFORMITY**

LabTest Laboratory  
Certificate NO.: LBTC131122CE

**EC Declaration of CPD Conformity**

The following product has been tested by Labtest Technology Laboratory Ltd. with the following standards and found in conformity with the EC Council Directive of 89/106/EEC. It is possible to use CE marking to demonstrate the conformity with this CPD Directive.

Report No.: LBTR131122CE  
 Applicant: SHENZHEN DRAGON GLASS CO., LTD  
 Address: Yunhai enterprise headquarters base, Longcheng street, Longgang, Shenzhen, China  
 Manufacturer: SHENZHEN DRAGON GLASS CO., LTD  
 Address: Yunhai enterprise headquarters base, Longcheng street, Longgang, Shenzhen, China  
 Product: Laminated Safety Glass  
 Sizes: 1.52\*5mm, 5mm\*1.52\*6mm, 8mm\*1.52\*8mm, 10mm\*1.52\*10mm, 12mm\*1.52\*12mm  
 Model No.:  
 Trade Mark: N/A  
 Test Standards: EN ISO 12543-2:2011, EN ISO 12543-3:2011

The referred test report(s) show that the product complies with the essential requirements of the above listed standards. The applicant is authorized to use this certificate in connection with the EC declaration of CPD conformity according to the Directive.

CE

LabTest Laboratory  
Date of Issue: Nov 22, 2013

This certificate of conformity is based on a single evaluation of the submitted sample(s) of the above-mentioned product. It does not imply an assessment of the whole production and other relevant Directives have to be observed.

40, Dongfengqiang Building, Fiyun Road, Bao'an District, Shenzhen, P.R. China  
 Tel: No. 755-8311 9383 Fax: No. 755-8311 9385 Http://www.labtest.com

**RED** Research Engineering Development Facade Consultants Limited  
 研究發展建築外圍護設計顧問有限公司  
 Tel: (852) 2867-0930 Fax: (852) 2862-6105

**Report R19H01-1A**  
 OR  
**Calibration of Oven No. 3**  
 For  
**Heat Soak Process for Tempered Glass to BS EN 14179-1: 2016**  
 and  
 fulfilling the requirements of  
**Sections 8.1 & 9.3 of Code of Practice for Structural Use of Glass 2018 of Buildings Department of Hong Kong**

Prepared for:  
 Glass Supplier & Glass Fabricator:  
**SHENZHEN DRAGON GLASS CO., LTD**  
 Yunhai enterprise headquarters base, Longcheng, Longgang District, Shenzhen, China

Research Engineering Development Facade Consultants Limited  
 Valid Period: from 2 August 2019 to 1 August 2024  
 Issue Date: 2 August 2019

**QUALITY MANAGEMENT SYSTEM CERTIFICATE**

Certificate No.: 18716Q110200805

We hereby certify that  
**Shenzhen Dragon Glass Co., Ltd**  
 Unified social credit code/Organization code:91440300062733091Q  
 Address: Yunhai enterprise headquarters base, Longcheng, Longgang District, Shenzhen, China

by reason of its  
 Quality Management System  
 has been awarded this certificate for compliance with the standard  
**ISO 9001:2015**

The Quality Management System Applies in the following area  
**Sales of Building Glass (Float Glass, Tempered Glass, Laminated Glass, Insulated Glass, Mirror Glass and Other Special Glass)**  
 Inapplicable Clause: 8.5.3

Date of Issue: Nov 09, 2016 Date of Validity: Nov 09, 2019

Surveillance Audit (The first time) Surveillance Audit (The second time) Surveillance Audit (The third time)

(The quality management system is subject to yearly surveillance audit within the period of validity; the certificate is valid only when used together with an Acceptance Notice of Surveillance Audit issued by SDC.)

Issued by: 尹雪晨

This certificate and its relevant information can query in the website of Certification and Accreditation Administration of the People's Republic of China (www.cca.gov.cn)

SHENZHEN SHENMA INTERNATIONAL CERTIFICATION CO., LTD  
 Address: 5th, Ansheng, Guangze first road 1, Qianhai Shenzhen-HongKong Cooperation zone, Shenzhen

**IGCC** International Glass Certification Council  
 Administrative Management Systems, Inc.  
 205 West Main Street, P.O. Box 730  
 Sackett Harbor, NY 13685  
 Phone: (315) 846-2247 Fax: (315) 846-2247  
 E-mail: igcc@amsinc.com

**IGMA** International Glass Manufacturers Association  
 10000 Old Orchard Road, Suite 100  
 Dallas, TX 75243-4600  
 Phone: (972) 412-1000 Fax: (972) 412-1001  
 E-mail: igma@igma.org

**ACKNOWLEDGEMENT OF CERTIFICATION**  
 THIS IS TO ACKNOWLEDGE THAT AS OF THIS DATE  
**Shenzhen Dragon Glass Co., Ltd**  
 Shenzhen, Guangdong

IS A CURRENT LICENSEE AND HAS MET ALL GUIDELINES AND REQUIREMENTS FOR THE IGCC/IGMA CERTIFICATION PROGRAM AND AS SUCH IS ELIGIBLE TO LABEL THE BELOW INDICATED PRODUCT(S) AS IGCC/IGMA CERTIFIED. THE FOLLOWING ARE IN COMPLIANCE WITH ASTM E1196 FOR SEAL DURABILITY OF INSULATING GLASS UNITS AND PASSING GAS CONTENT INITIAL AND AFTER WEATHERING (IGCC) CERTIFICATION REQUIREMENTS AS INDICATED.

CERT.#	GLASS	SPACER	FRAME CONST.	DESICCANT	SEALANT	GCIA
4333	UK2	MA	BC4GSLC	LF	PB/SZ	No

THIS IGCC/IGMA PROGRAM CERTIFICATION IS CURRENT AND IN FULL EFFECT AS OF THIS ISSUE DATE. CERTIFICATION IN THE IGCC/IGMA PROGRAM IS SUBJECT TO SEMI-ANNUAL RENEWAL. PLEASE CHECK THE CURRENT CERTIFIED PRODUCTS DIRECTORY OR THIS OFFICE FOR MOST CURRENT INFORMATION.

Issue: February 13, 2019 February 13, 2019 - January 31, 2020  
 DATE OF ISSUE CERTIFICATION PERIOD

ADMINISTRATIVE MANAGER

**SGCC** safety glazing certification council  
 Administrative Office, A.M.S. Inc.  
 205 West Main Street, P.O. Box 730  
 Sackett Harbor, NY 13685  
 Phone: (315) 846-2247  
 E-mail: sgcc@amsinc.com

**ACKNOWLEDGEMENT OF CERTIFICATION**  
 THIS IS TO ACKNOWLEDGE THAT AS OF THIS DATE  
**Shenzhen Dragon Glass Co., Limited**  
 Shenzhen, Guangdong

IS A CURRENT LICENSEE AND HAS MET ALL GUIDELINES AND REQUIREMENTS FOR THE SGCC/IGMA CERTIFICATION PROGRAM AND AS SUCH IS ELIGIBLE TO LABEL THE BELOW INDICATED PRODUCT(S) AS SGCC/IGMA CERTIFIED. REPRESENTATION SAMPLES OF THE BELOW PRODUCTS HAVE BEEN FOUND TO BE IN COMPLIANCE WITH ANSI Z97.1-2006 OR 2015 AS INDICATED, CGCC, IGCC, OR CPD LAM STANDARDS, OR BOTH STANDARDS, KNOWN AS COMPOSITE CERTIFICATION (CCMP), OR BOTH STANDARDS WITH CAN/CSG 12.1 KNOWN AS CCMP-CAN.

SGCC#IN	MM	Attributes	IKT	Typn.Code	Max.Size	ANSI Class	Test Std	ANSI Z97.1 Xcert
4303	6/32	A		TYG	U	A	CGMP-CAN	2009
4304	3/16	B		TYG	U	A	CGMP-CAN	2009
4305	1/4	B		TYG	U	A	CGMP-CAN	2009
4306	5/16	B		TYG	U	A	CGMP-CAN	2009
4307	3/8	B		TYG	U	A	CGMP-CAN	2009
4308	1/2	B		TYG	U	A	CGMP-CAN	2009
4309	15	CS		TYG	U	A	CGMP-CAN	2009
4310	3/4	B		TYG	U	A	CGMP-CAN	2009
4312	0/0	8-18+ (WGA)	(S80)	LYG	U	A	CGMP-CAN	2008
4375	0/0	10-18+ (WGA)	(S80)	LYG	U	A	CGMP-CAN	2008
5052	1/4	B		TBG	U	A	CGMP-CAN	2008
5053	5/16	B		TBG	U	A	CGMP-CAN	2008
5054	3/8	B		TBG	U	A	CGMP-CAN	2008
5055	1/2	B		TBG	U	A	CGMP-CAN	2008

THIS SGCC PROGRAM CERTIFICATION IS CURRENT AND IN FULL EFFECT AS OF THIS ISSUE DATE. CERTIFICATION IN THE SGCC PROGRAM IS SUBJECT TO SEMI-ANNUAL RENEWAL. PLEASE CHECK THE SGCC WEBSITE AT WWW.SGCC.ORG OR THIS OFFICE FOR MOST CURRENT INFORMATION.

Issue: Feb 14, 2019  
 DATE OF ISSUE CERTIFICATION PERIOD

ADMINISTRATIVE MANAGER

Möchten Sie Ihre zukünftigen Projekte mit sandgestrahltem Glas beginnen? Bitte kontaktieren Sie uns für kostenlose Anfragen.

Sie können auch auf die Links zu unserer offiziellen [LinkedIn](#)-Seite und [Facebook](#)-Seite klicken, um weitere Informationen zu erhalten.