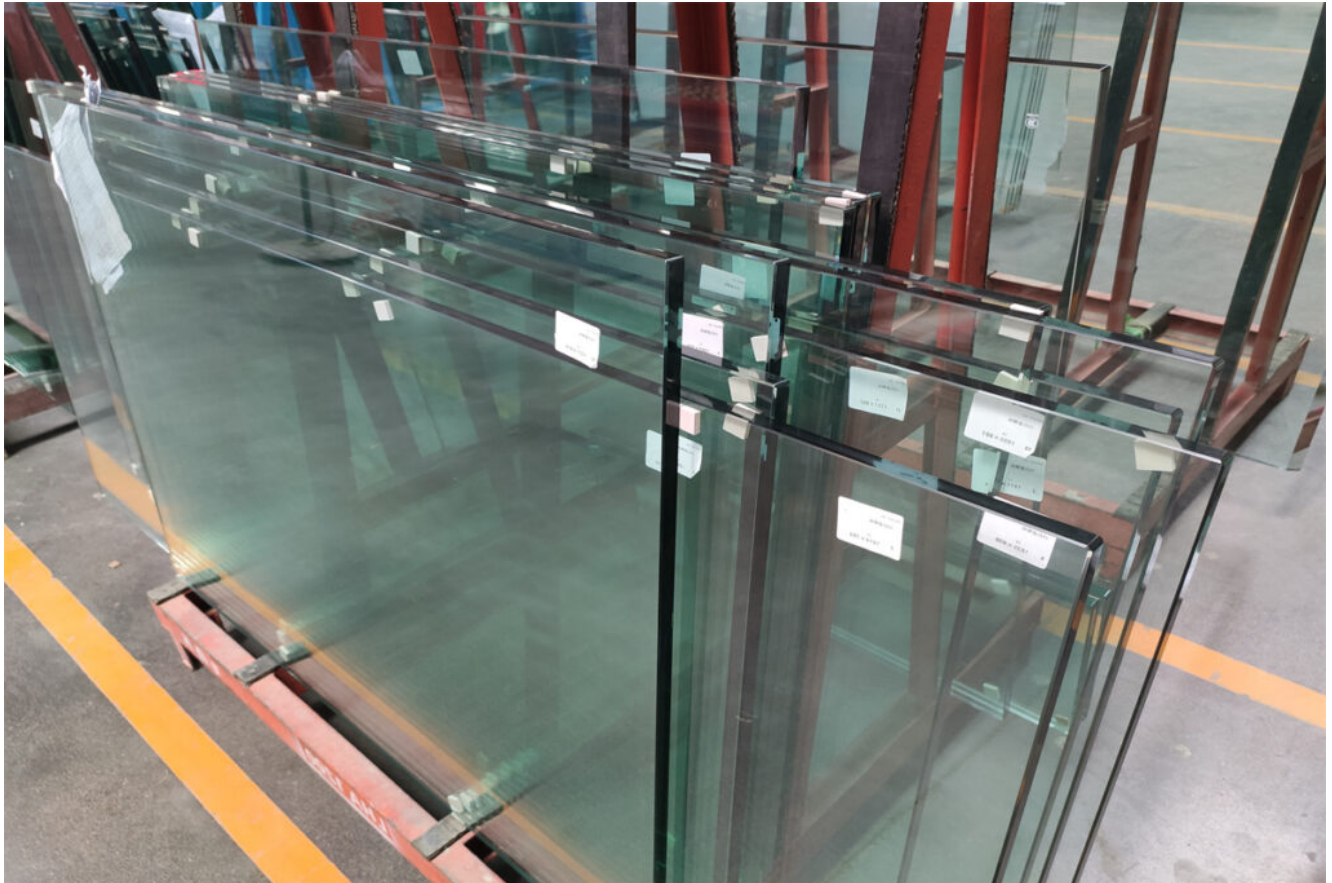


# ASTM Certified 15mm Clear Toughened Glass Panel for Facades and Fencing



## 1- What is 15mm clear toughened glass panel for facades?

15mm clear toughened glass panel, also known as 5/8 tempered glass sheet, is processed to be stronger and more resistant to breakage than standard 15mm [annealed glass](#). It undergoes a special heating and rapid cooling process that increases its

strength. 15mm [toughened glass sheet](#) is designed to break into small, relatively harmless fragments rather than sharp shards if it does break, reducing the risk of injury.

Thicker glass panels are often used in structural applications where additional strength is required, because it's transparent, so they can offer views, natural light, and contribute to the overall design aesthetic of a building.

Overall, a 15mm clear toughened glass panel for facades is a high-quality, durable glass panel specifically designed for use in [building exteriors](#) where transparency, strength, and safety are essential.

## 2. Feature

### Strength

---

- 5/8 clear toughened glass panel is much stronger than regular glass due to a process of controlled thermal or chemical treatments. This makes it more resistant to breakage from impacts or stress.



### Safety

---

- When it does break, toughened glass shatters into

small, relatively harmless fragments instead of sharp shards, reducing the risk of injury.

## Thickness

---

- At 15mm(5/8), the glass panel offers increased durability and can withstand higher loads compared to thinner alternatives.

## Heat Resistance

---

- Safety toughened glass sheet has increased resistance to thermal stress, making it suitable for use in areas where temperature fluctuations

are common, such as exterior hot area.

## Durability

---

- Toughened glass panels are more resistant to scratches and other surface damage compared to regular glass, prolonging their lifespan and maintaining their aesthetic appeal.

## Weather Resistance

---

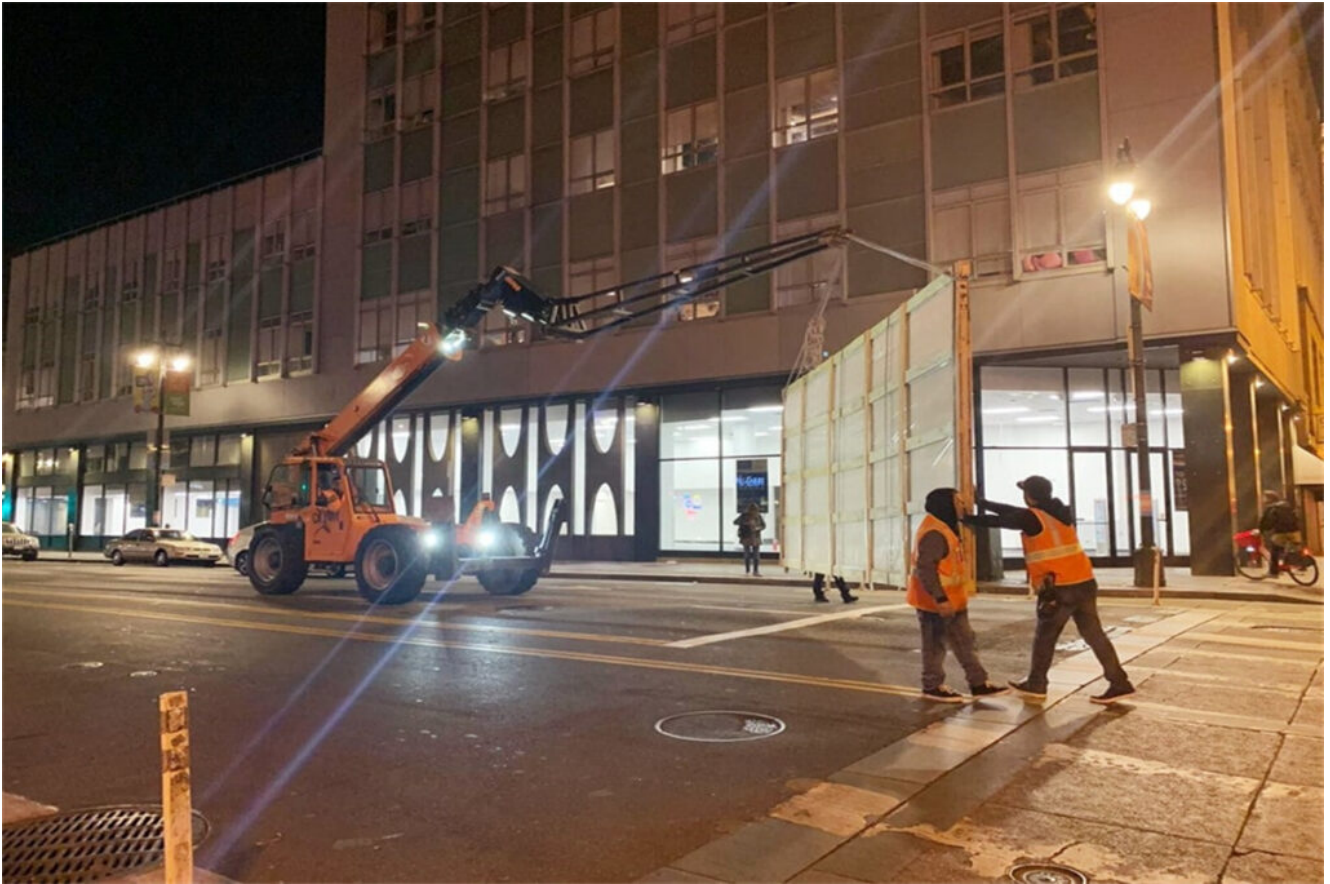
- Clear toughened glass panels are suitable for outdoor use as they are highly resistant to environmental factors such as wind, rain, and UV radiation.

### 3. Quality Standard

[Dragon Glass](#) have being awarded so many certificates for 15mm thick toughened glass, see below:

- Subject to **BS standard**
- Subject to **SGCC standard**
- Subject to **ASTM C1048 standard**
- Subject to **CE- EN12150 standard**
- Subject to the **ISO 9001 standard**
- Subject to the **AS/NZS 2208:1996 standard**

### 4. Applications



### **15mm normal clear toughened glass for storefronts in USA**

One of our client, they use 15mm clear toughened glass panel for their storefront project, which size reach 2400x7800mm, even though they need only 4 panels, due to our very strong packaging, no panels break, so you can always trust Dragon Glass.

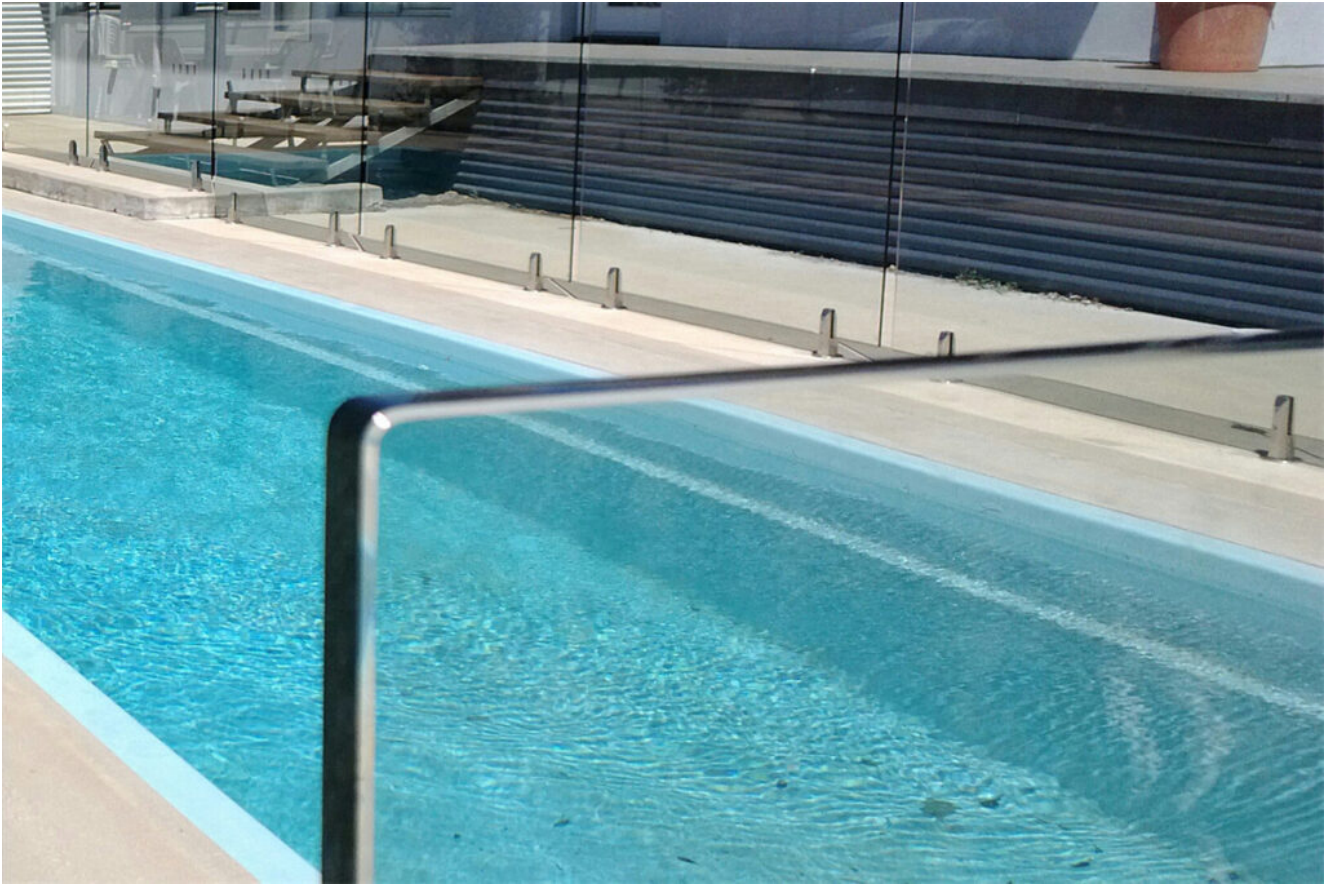




**15mm high quality tempered ESG glass for Auto store curtain walls in Domestic market**

Here is one of our project for AITO brand, which use 15mm iron free toughened glass sheet, one panel have 1200x3530mm, now we also worked with so many China brand or international brand do their auto store.





**15mm safety toughened glass for swimming pool glass railings/glass fencings**

We have helped over hundreds clients finished their home projects all over the world with the swimming pool glass fence, besides 15mm toughened glass, others can be [12mm toughened glass](#), 10mm toughened glass, and so on.

## **5. Specifications**

<p><b>Item name:</b> 15mm clear toughened glass panel, 5/8 thick toughened glass</p>
--------------------------------------------------------------------------------------

<b>Glass color:</b> Clear, ultra clear, and ceramic frit colors
<b>Glass shape:</b> flat/curved;
<b>Glass size:</b> Stock size for products, customized size, max: 3300mmx13000mm;
<b>Quality:</b> IGCC/ASTM/CCC/ISO9001, etc;
<b>Production time:</b> 20 days, if have holes or cutouts will reach 25 days
<b>Packing:</b> Export level strong plywood crates;
<b>Payment term:</b> 100% before delivery, others can negotiate

## 6. Production Details

### Cutting line

[Dragon Glass group](#) have over 7 cutting line, including Bottero, Lisec auto cutting line, CNC cutting line, and so on, according to the client's drawing, our team will try our best to help you with your glass sizes and shapes.



## Edging line

We support over 12 types of edge polishing, no matter building glass, but also furniture glass edges, so if you have other glass requirements, kindly [contact our team.](#)





## Tempering line

Our facilities of tempered glass which come from Land Glass & North Glass or International brands will let all glass be tempered in very good condition, The standard for us is a self-explosion rate of less than 0.2%, super flatness, and no defects.



## 7. Packing and Delivery

### Package Information of clear toughened glass panel

1. We use plywood crates only Because which made by compressing and bonding processed wood, and can be exported without any complex procedures, making it very convenient.

2. The size of the safety toughened glass is often not uniform. For safety transportation, the interior of the plywood box is filled with pads and blocks to provide corks between the tempered esg glass panel. Then, it is wrapped with plywood strips because the more exposed it is, the safer it is. Diagonal bracing of the plywood strips is essential to enhance the strength of the box.
3. Many clients ask why we don't use fully sealed packaging. That's due to the more exposed it is, the safer it is. During transportation by forklift or crane, it is immediately clear that there is fragile thick toughened glass inside, prompting extra attention to safety.





Packaging and delivery for 15mm clear toughened glass panel

15mm clear toughened glass is a hot sell product from Dragon Glass, which widely use for different projects, but it's not our professional, most of our knowledge at how to help client to solve the problem during the design, delivery time, and save budget to win more benefit for them. So if have interests, please do not hesitate to [contact](#).