

Super energy-saving insulated glass for refrigerator doors 4+6A+4 with low e-coating prices



What is 4+6A+4mm upright insulated ?glass for refrigerator doors

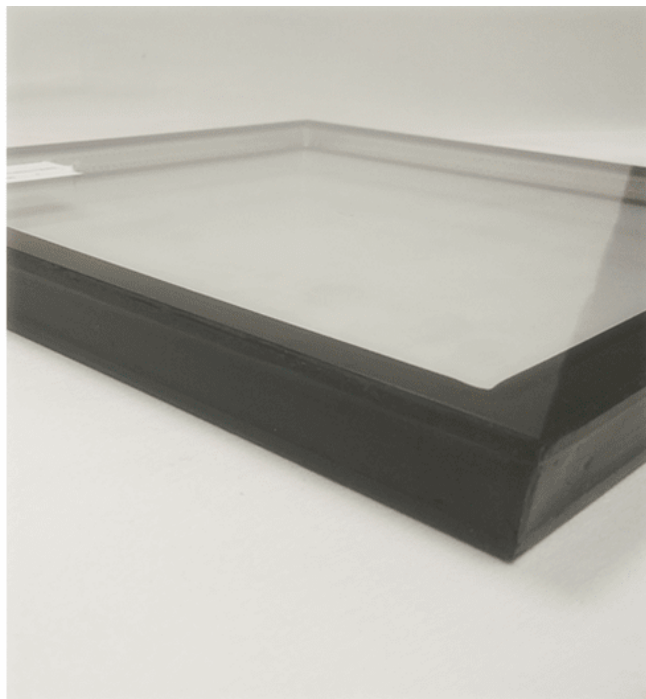
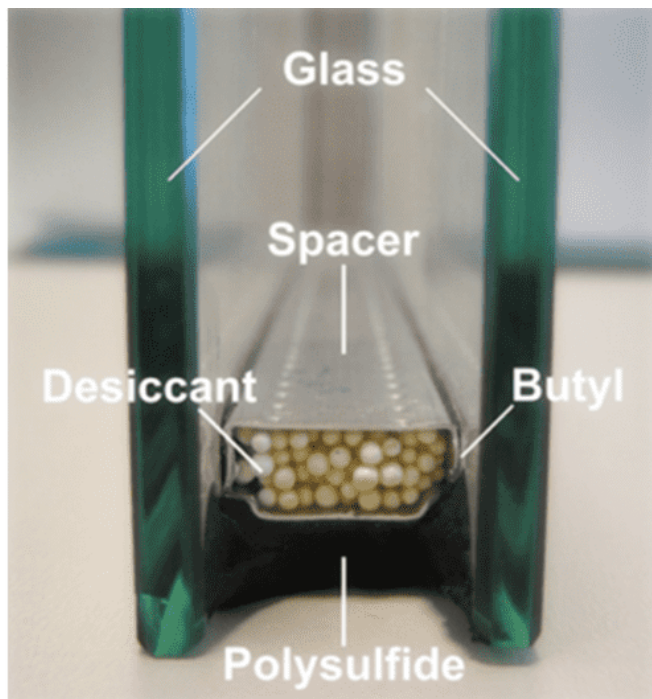
Upright insulated glass for refrigerator doors means specially made [insulated glass](#), especially with high performance of energy saving, which could help refrigerators to isolate the heat transfer. With low e coating applied on the glass surface, the IGU glass can achieve a U value lower than 1.8W/m²K, which means you could keep the cooling environment inside the refrigerator, therefore saving the electric power

.supply



4+6A+4mm low e upright insulated glass consists of one panel of 4mm low e glass and one panel of 4mm clear glass, both are tempered and then isolated with a 6mm aluminum spacer. The

aluminum spacer is filled with moisture which could also keep the vapor and air coming through to the chamber. On the edge of the IGU panel, there are butyl sealants and structural sealants to enhance the isolation



: Features

High transmittance: with high transmittance glass and .1 low e coating, we can ensure the IGU glass with 70~80% .visual light transmittance

Super lightweight: The panel is only 22KG/SQM, making it .2 super light for movement, you don't have to worry about .opening and shutting doors

Excellent power saving performance: With high- .3 performance low e coating applied on the glass, you can have low U value and good isolation of the heat, in a .result you have the electric power saved

Multiple options for the glass panels: you can also .4 choose 3mm glass, 3.2mm glass, 5mm glass, etc. Tinted

glass like grey color, bronze color, etc is according to
.your style

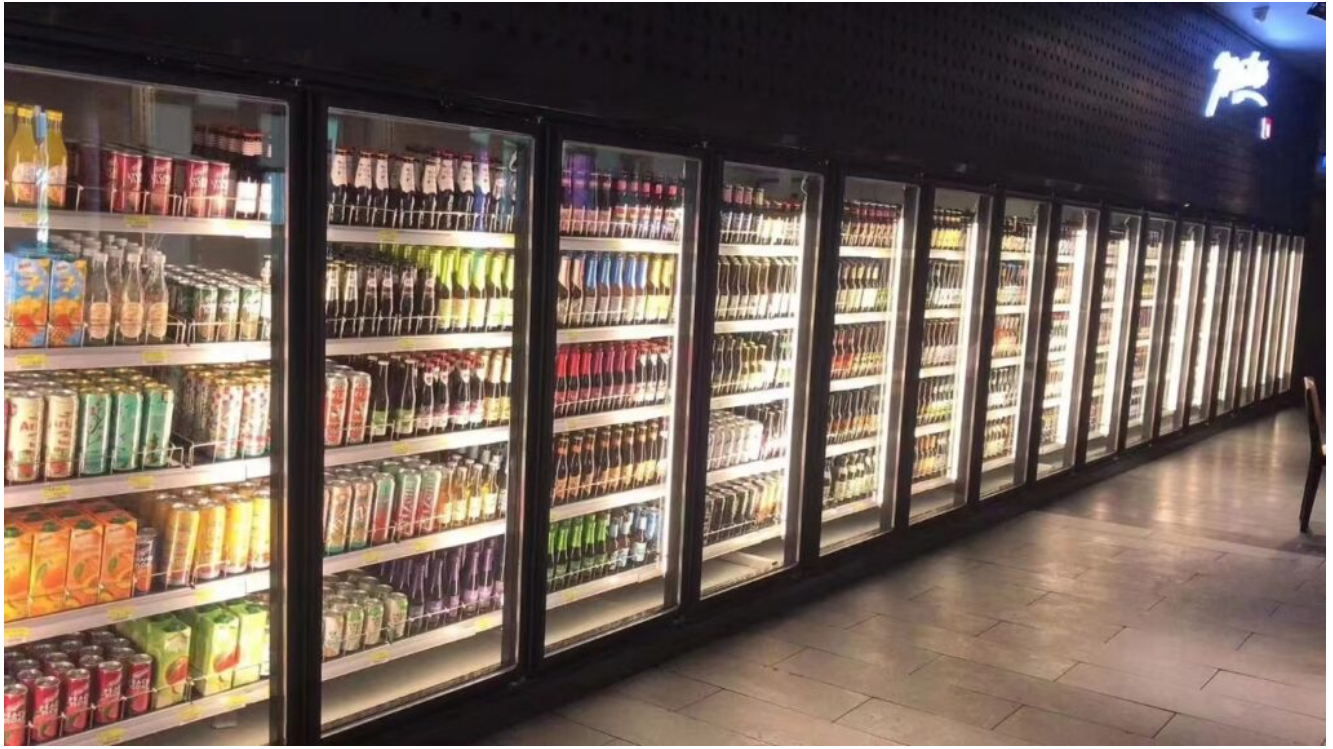
Quality

- AS ▪
- CE ▪
- ISO9001 ▪
- ASTM ▪
- CCC ▪

Applications

:You can use the IGU glass for refrigerator doors









Shenzhen Dragon Glass insulated glass for refrigerator performance

Production name: 4mm+6a+4mm insulated glass, Upright Cooler with Glass Door
Glass thickness: 14mm
Glass color: Clear
;Glass shape: Flat, Curved is available
Process: Coating, cutting, edging, tempering, insulating, ;packing, etc
;Quality: CE/ASTM/AS/ISO9001/BS/CE
;Packing: Strong plywood crates
;Capacity: 1000SQM/day
;Production time: 10~15 days

:Packing details



If you are interested in Insulated Glass for refrigerator doors, please [contact](#) the Dragon Glass team today, our team of experienced [glass experts](#) is ready to answer any questions you .may have